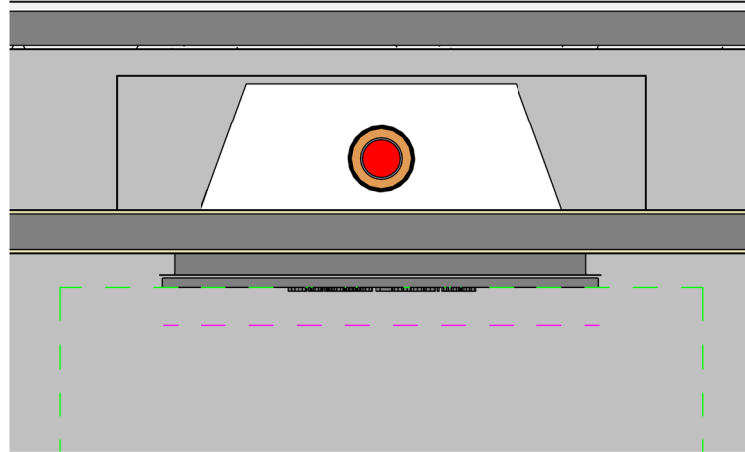
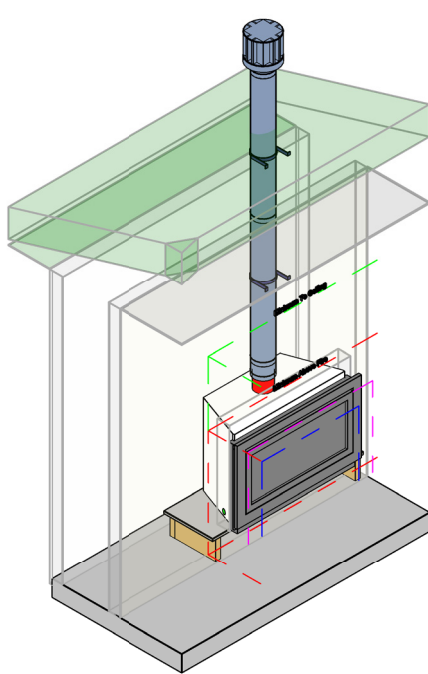


Note:

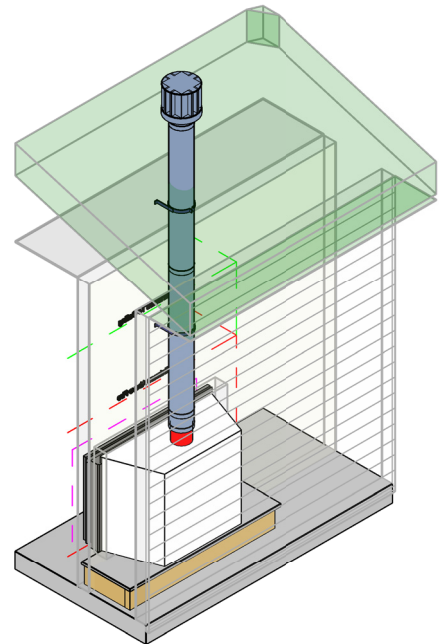
- Example shows flue termination assembly of 2x1.2m Flue pipes 1x150mm Flue pipe 2xWall straps and Roof cowl. Pipes cannot be cut in size
- Can be used Flue kit vertical 3.6m (Code: R3665)
- Maximum flue length 5.4m
- Maximum two 90° bends allowed if partly horizontal termination required
- Minimum clearance from the inner flue to a combustible material must be greater than 25 mm



Plan View



Isometric View Front



Isometric View Back